



The tool of thought for  
**software solutions**

# **Dyalog for Raspberry Pi**

## **Reference Guide**

Dyalog version 14.1

*Dyalog is a trademark of Dyalog Limited  
Copyright © 1982-2015 by Dyalog Limited  
All rights reserved.*

Dyalog for Raspberry Pi Reference Guide

Dyalog version 14.1  
Document Revision: 20150717\_141

*No part of this publication may be reproduced in any form by any means without the prior written permission of Dyalog Limited.*

*Dyalog Limited makes no representations or warranties with respect to the contents hereof and specifically disclaims any implied warranties of merchantability or fitness for any particular purpose. Dyalog Limited reserves the right to revise this publication without notification.*

*email: [support@dyalog.com](mailto:support@dyalog.com)  
<http://www.dyalog.com>*

#### **TRADEMARKS:**

*SQAPL is copyright of Insight Systems ApS.*

*Array Editor is copyright of davidliebtog.com*

*UNIX® is a registered trademark in the United States and other countries, licensed exclusively through X/Open Company Limited.*

*Windows® is a registered trademark of Microsoft Corporation in the United States and other countries.*

*Oracle®, Javascript™ and Java™ are registered trademarks of Oracle and/or its affiliates.*

*Mac OS® and OS X® (operating system software) are trademarks of Apple Inc., registered in the U.S. and other countries.*


*All other trademarks and copyrights are acknowledged.*

# Contents

<b>1</b>	<b>About This Document</b>	<b>1</b>
1.1	Audience	1
1.2	Conventions	1
<b>2</b>	<b>Introduction</b>	<b>3</b>
<b>3</b>	<b>Getting Started</b>	<b>4</b>
3.1	Pre-requisites	4
3.2	Installing Dyalog on the Raspberry Pi	4
3.2.1	Having Multiple Versions of Dyalog on the Raspberry Pi	5
3.3	Upgrading Dyalog on the Raspberry Pi	6
3.4	Uninstalling Dyalog from the Raspberry Pi	6
<b>4</b>	<b>Dyalog on the Raspberry Pi</b>	<b>7</b>
4.1	Initialising Dyalog on the Raspberry Pi	7
4.2	Configuring Dyalog on the Raspberry Pi	8
4.2.1	Configuring the Font Set	8
4.2.2	Changing the Background Colour	9
4.2.3	Changing the Colours for Syntax Colouring	9
4.2.3.1	Colour Values	10
4.3	Using Dyalog on the Raspberry Pi	10
4.3.1	get_started	11
4.3.2	APLKeys	11
4.3.3	workspaces	12
4.3.4	references	12
4.4	Logging the Session	12
<b>5</b>	<b>Starting with Dyalog</b>	<b>13</b>
<b>A</b>	<b>Useful Resources</b>	<b>14</b>
<b>B</b>	<b>Keyboard Key Mappings</b>	<b>15</b>
<b>C</b>	<b>Example Code</b>	<b>16</b>
C.1	Morse Code	16
C.2	Average Dice Throw Values	18
	<b>Index</b>	<b>20</b>

# 1 About This Document


This document is intended for anyone who wants to run Dyalog on a Raspberry Pi.

 This document does not provide information on the Raspberry Pi or Dyalog – information and documentation for these products can be downloaded from <http://www.raspberrypi.org/> and <http://docs.dyalog.com> respectively.

The information provided in this document supplements that given in the *Dyalog for UNIX Installation and Configuration Guide* and the *Dyalog for UNIX User Guide* (available to download from <http://docs.dyalog.com>). In cases where the information given is different between the two documents, this document should be regarded as the definitive source for Dyalog on the Raspberry Pi.

## 1.1 Audience


It is assumed that the reader has a basic understanding of Linux on the Raspberry Pi. No prior knowledge of Dyalog is required.


 For those who are new to Dyalog, some guidance on resources that can help with getting started is included in *Chapter 5*.



## 1.2 Conventions

Various icons are used in this document to emphasise specific material.

General note icons, and the type of material that they are used to emphasise, include:

 Hints, tips, best practice and recommendations from Dyalog Ltd.

 Information note highlighting material of particular significance or relevance.

-  Legacy information pertaining to behaviour in earlier releases of Dyalog or to functionality that still exists but has been superseded and is no longer recommended.
-  Warnings about actions that can impact the behaviour of Dyalog or have unforeseen consequences.

Although the Dyalog programming language is identical on all platforms, differences do exist in the way some functionality is implemented and in the tools and interfaces that are available. A full list of the platforms on which Dyalog version 14.1 is supported is available at [www.dyalog.com/dyalog/current-platforms.htm](http://www.dyalog.com/dyalog/current-platforms.htm). Within this document, differences in behaviour between operating systems are identified with the following icons (representing Mac OS, Linux, UNIX and Microsoft Windows respectively):



## 2 Introduction

Dyalog – the tool of thought for software solutions – is often used in research and business applications where it is important to integrate domain experts in the software development process. One of the reasons why Dyalog is selected is that applications written using APL often out-perform and outscale competing products written using compiled languages, even though compiled code should theoretically out-perform interpreted code. Dyalog, the only APL interpreter for the Raspberry Pi, allows the benefits of APL to be leveraged on the Raspberry Pi by bringing the concise, expressive power and performance of Dyalog to the compact, credit-card sized Raspberry Pi computer.

With the appropriate sensors and attachments, Dyalog can turn the Raspberry Pi into much more than a computer, for example, a temperature monitor, a proximity indicator or a robot. The progress of a robot being developed at Dyalog can be monitored through the following blogs:

- Dyalog developer blog: <http://www.jasonrivers.co.uk/category/dyalog/>  
(includes information on how to replicate the robot's hardware)
- Dyalog blog: <http://www.dyalog.com/blog/category/robots>

Some examples of code written for the Raspberry Pi using Dyalog are included in *Appendix C*.



The licence for Dyalog on the Raspberry Pi is for non-commercial use only. To license Dyalog on the Raspberry Pi for commercial use, please contact [sales@dyalog.com](mailto:sales@dyalog.com).

## 3 Getting Started

This chapter covers the system requirements and installation information for installing 32-bit Unicode Dyalog on the Raspberry Pi, as well as the information needed to upgrade or remove an installation.



Only the 32-bit Unicode edition of Dyalog is available for the Raspberry Pi.

Dyalog on the Raspberry Pi can be accessed from PuTTY or other terminal emulators (as described in the *Dyalog for UNIX Installation and Configuration Guide*) or from another Linux desktop. It is not possible to use RDP, VNC or any X-window emulators from Microsoft Windows.

### 3.1 Pre-requisites

Dyalog can be installed and run on the following Raspberry Pi versions:

- Model A (256 MB RAM)
- Model B (256 MB RAM)
- Model B Rev. 2 (512 MB RAM)

This document assumes that one of these Raspberry Pi versions is available and that it has at least 100 MB available in the root file system for the installation of Dyalog – another 100 MB is also required temporarily for the installation image.

The instructions in this document assume that the Raspberry Pi is running a Raspbian operating system (this is the only operating system supported by Dyalog Ltd).

### 3.2 Installing Dyalog on the Raspberry Pi



The information in this section is also available at <http://packages.dyalog.com>.

---

## To install Dyalog on the Raspberry Pi

1. Open a terminal window and log in as the root user – change to the root user with the following command:

```
$ sudo su
```

2. Configure a repository using the following commands:

```
$ wget -O - http://packages.dyalog.com/dyalog-apt-key.gpg.key  
| apt-key add -
```

```
$ echo 'deb http://packages.dyalog.com wheezy main' >  
/etc/apt/sources.list.d/dyalog.list
```

3. Install Dyalog using the following commands:

```
$ apt-get update
```

```
$ apt-get install dyalog-unicode
```

4. Read and accept the licence agreement. For non-commercial use, accepting the licence agreement entitles you to a free, unregistered version of Dyalog for Raspberry Pi. To license Dyalog on the Raspberry Pi for commercial use, please contact [sales@dyalog.com](mailto:sales@dyalog.com).
- 

Dyalog can now be run on the Raspberry Pi (see *Section 4.1*).

The following command can be used to see all the available packages:

```
$ apt-cache search dyalog
```

### 3.2.1 Having Multiple Versions of Dyalog on the Raspberry Pi

Multiple versions of Dyalog can be installed on the Raspberry Pi. To install additional versions, change to the root user and enter the following command:

```
$ apt-get install dyalog-unicode-<version-specific number>
```

where `<version-specific number>` is a three-digit number indicating the version.

Possible values are:

- 132 (for Dyalog version 13.2)
- 140 (for Dyalog version 14.0)
- 141 (for Dyalog version 14.1)



### 3.3 Upgrading Dyalog on the Raspberry Pi

Dyalog updates are included with system updates and can be performed at the same time.

---

#### To upgrade to a later release or version of Dyalog

1. Open a terminal window and log in as the root user – change to the root user with the following command:  

```
$ sudo su
```
2. Determine the packages available to upgrade using the following command:  

```
$ apt-get update
```
3. Upgrade the identified packages using the following command:  

```
$ apt-get upgrade
```

---

Dyalog is now upgraded.

### 3.4 Uninstalling Dyalog from the Raspberry Pi

If necessary, Dyalog can be uninstalled from the Raspberry Pi.

---

#### To uninstall Dyalog from the Raspberry Pi

1. Open a terminal window and log in as the root user – change to the root user with the following command:  

```
sudo su
```
2. Uninstall Dyalog using the following command:  

```
$ apt-get purge dyalog-unicode
```

---

Dyalog is now uninstalled.



Uninstalling Dyalog does not destroy the repository configured in *Section 3.2*.

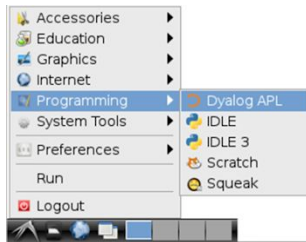
## 4 Dyalog on the Raspberry Pi

This chapter covers the commands necessary to initialise and use 32-bit Unicode Dyalog on the Raspberry Pi.

### 4.1 Initialising Dyalog on the Raspberry Pi

Dyalog can be started on the Raspberry Pi in either of the following ways:

- In a terminal window, enter `dyalog`
- From the start menu, select **Programming > Dyalog APL**



Both of these methods display a new session window in which Dyalog can be run. The session window is identical to the standard Linux non-GUI Dyalog session window as documented in the *Dyalog for UNIX User Guide*.

- **i** If multiple versions of Dyalog are installed on the Raspberry Pi (see *Section 3.2.1*), then entering `dyalog` in a terminal window will start the latest installed version. Alternative versions can be started by entering `/opt/mdyalog/<version>/32/unicode/mapl`.

## 4.2 Configuring Dyalog on the Raspberry Pi

Some configuration is a matter of choice (for example, the colour scheme). However, failure to configure the font set can result in Dyalog not displaying correctly.

By default, the Migration Level  $\square$ ML (that is, the degree of migration of Dyalog towards IBM's APL2) is 1 – this is reflected in this document and code samples that are available on the open source repository (<https://github.com/APLPi>).



Although Dyalog Ltd intends to use a migration level of 1 in all future documentation and tool development, some of the distributed code and earlier documents have not yet been adjusted and could assume other levels.

### 4.2.1 Configuring the Font Set

Dyalog uses Unicode APL glyphs which do not display well in all fonts. Dyalog Ltd recommends using the APL385 Unicode font which is included with the installation.

To enable the session window to display the complete range of glyphs, this font must be used – it is installed as part of the Dyalog installation and must be set as the default terminal font the first time that Dyalog is run on the Raspberry Pi.



Setting the default terminal font to be the APL385 Unicode font impacts all terminal windows. However, as it is a monospace font the effect of doing this is minimal.

---

#### To configure the default terminal font to be the Dyalog font

1. In the Dyalog session window, select **Edit > Preferences**.  
The **Preferences** window is displayed.
  2. In the **Style** tab of the **Preferences** window, click on the **Terminal Font** option. By default, this is *Monospace*.  
The **Font Selection** window is displayed.
  3. From the **Family** list, select *APL385 Unicode*.
  4. Click **OK** to confirm your selection and be returned to the **Preferences** window.
  5. Click **OK** to be returned to the session window.
  6. In the Dyalog session window, press the **Control+L** keys simultaneously to refresh the window and restore the text that was previously visible.
-

## 4.2.2 Changing the Background Colour



This section is not specific to Dyalog on the Raspberry Pi and contains instructions that can be performed at any time. Changing the background colour of the default terminal window also changes the background colour of all terminal windows.

---

### To change the background colour of the terminal window

1. 1. In the Dyalog session window, select **Edit > Preferences**.  
The **Preferences** window is displayed.
  2. In the **Style** tab of the **Preferences** window, click on the **Background** option. By default, this is *black*.  
The **Pick a Colour** dialog box is displayed.
  3. Select the colour to use as the background colour by doing one of the following:
    - left-clicking the appropriate colour in the triangle on the left-hand side.
    - specifying the Red/Green/Blue values on the right-hand side.
  4. Click **OK** to confirm your selection and be returned to the **Preferences** window.
  5. Click **OK** to be returned to the session window.
  6. In the Dyalog session window, press the **Control+L** keys simultaneously to refresh the window and restore the text that was previously visible.
- 

## 4.2.3 Changing the Colours for Syntax Colouring

During input, the Dyalog session window employs different colours for different syntactical purposes. For example, an entry between APL quotes is a different colour to an entry that cannot be evaluated.

---

### Before changing the font colours

1. Open a terminal window
2. Copy `/opt/mdyalog/<version>/32/unicode/apltrans/xterm` to a suitable location, for example, `/home/<name>/dyalog/apltrans/`:
 

```
$ mkdir -p ~/dyalog/apltrans
$ cp /opt/mdyalog/14.0/32/unicode/apltrans/xterm
~/dyalog/apltrans/
```
3. Open the `~/config/dyalog/config` file and add the following line:
 

```
export APLTRANS=/home/<name>/dyalog/apltrans:$APLTRANS
```



The **dyalog** directory is automatically created under the **XDG\_CONFIG\_HOME** directory (by default this is **~/.config**) the first time Dyalog is run.

4. Save the amended **config** file.
- 

### To change the font colours

1. Open the **~/dyalog/apltrans/xterm** file for editing.
  2. Locate the appropriate entry and change it as required (see *Section 4.2.3.1*).
  3. Save the amended **xterm** file.
- 

#### 4.2.3.1 Colour Values

The colour definitions in the **xterm** file use precisely-defined formats that follow the convention *<what is being defined> : <definition> <colour> m*. This can be appended with **+** and a comment if required.

For font colours, the definitions are formatted as: *27 91 51 56 59 53 59 <colour> 109*

---

#### To determine the <colour> value

1. Use [http://en.wikipedia.org/wiki/File:Xterm\\_256color\\_chart.svg](http://en.wikipedia.org/wiki/File:Xterm_256color_chart.svg) to identify the required colour's number (1-255).
  2. Take each digit in the number individually and add 48 to it.  
The resulting set of one, two or three double-digit numbers is the <colour> value.  
For example, 162 has a <colour> value of 49 54 50 and 82 has a <colour> value of 56 50.
- 

## 4.3 Using Dyalog on the Raspberry Pi



All the information that is needed to run Dyalog on the Raspberry Pi is available from the Dyalog session window.

When you open the Dyalog session window, the **intro** workspace is displayed. The first time that you do this, introductory information is provided. This information can be displayed again at any time using the following command:

```
)load intro
```

Four other commands can be used to display different categories of information:

<code>get_started</code>	useful commands to get you started (see <i>Section 4.3.1</i> )
<code>APLKeys</code>	APL keyboard layout (see <i>Section 4.3.2</i> )
<code>workspaces</code>	example workspaces to try (see <i>Section 4.3.3</i> )
<code>references</code>	useful websites (see <i>Section 4.3.4</i> )

These commands can only be run from within the `intro` workspace.

### 4.3.1 `get_started`

The `get_started` command displays a list of valid commands that can be used to manipulate workspaces. These include:

<code>)load &lt;myws&gt;</code>	loads <code>&lt;myws&gt;</code> into the Dyalog session
<code>)save &lt;myws&gt;</code>	saves active workspace as <code>&lt;myws&gt;</code>
<code>)save</code>	saves active workspace
<code>)clear</code>	clears active workspace
<code>)reset</code>	resets state indicator
<code>)edit item</code>	opens the Dyalog editor in the session window for the specified item/items
<code>)off</code>	exits the Dyalog session window

### 4.3.2 `APLKeys`

The `APLKeys` command displays an image of the keyboard showing the keys used for Dyalog glyphs. This mapping applies to all Linux keyboard layouts.



Users who are familiar with the Dyalog user interface under Microsoft Windows should familiarise themselves with any differences between their usual keyboard layout and the Linux keyboard layout.

The image of Linux keyboard mappings is reproduced in *Appendix B*. This image is also available in the xterm file in the `/opt/mdyalog/<version>/32/unicode/aplkeys` directory.

To enter APL glyphs in a workspace, hold down the **Windows** key while pressing the appropriate character key. When there are two glyphs on a key, hold down the **Windows** key while pressing the appropriate character key to get the lower of the two and hold down the **Windows** key and the **Shift** key while pressing the appropriate character key to get the upper of the two.

### 4.3.3 workspaces

The `workspace` command displays some example workspaces that can be loaded using the `)load <workspace>` command. These include:

<code>sudoku</code>	sudoku solver for 2-D and 3-D puzzles
<code>life</code>	animated Conway's Game of Life
<code>echo</code>	TCP echo test (runs on port 7000)

### 4.3.4 references

The `references` command displays a list of websites that can assist with understanding and learning Dyalog. Further useful references are located in *Appendix A*.

## 4.4 Logging the Session

By default, a session logfile called **default.dlf** is created in the current working directory. This binary file's default name and location can be overridden.

---

### To override the session logfile name and location


1. Open a terminal window.
  2. Open the `~/.config/dyalog /config` file and add the following line:  

```
export LOG_FILE=/<path>/<logfile>.dlf
```
  3. Save the amended **config** file.
-

## 5 Starting with Dyalog

If you've not used Dyalog before then welcome! Dyalog is a concise and powerful language that has built a following of passionate advocates and it's always good to welcome someone new into the community.

Dyalog needs to be understood for its elegance and simplicity to be appreciated – in this way it is like every other coding language. Dyalog Ltd recommends the following two resources, used together, to start your APL journey:

- Try Dyalog online: <http://www.tryapl.org/>  
TryAPL is a free application in which many of the functions and operators that form the core of Dyalog can be tested.
-  When accessing the TryAPL application using Midori, the information in the left-hand side of each tab needs to be highlighted to be displayed. This rendering issue is due to the browser not fully supporting CSS/Javascript.
- "Mastering Dyalog APL": <http://www.dyalog.com/mastering-dyalog-apl.htm>  
"Mastering Dyalog APL" is a complete guide to Dyalog. Its clear explanations and tutorials help the reader to advance from novice to specialist. Sample exercises are provided throughout – many of these can be performed in the TryAPL user interface. Alternatively, try them using the Dyalog Session window on your Raspberry Pi. "Mastering Dyalog APL" is available as a free pdf download.

Additional resources that can help you as you progress further with Dyalog are detailed in *Appendix A*. Some examples of what can be achieved using Dyalog on the Raspberry Pi are included in *Appendix C*.



## A Useful Resources

The following links provide information that might be useful when mastering Dyalog and enhancing the capabilities of your Dyalog-driven Raspberry Pi:

- Dyalog documentation: <http://docs.dyalog.com>
- Dyalog sample dfn workspaces: <http://dfns.dyalog.com>
- Try Dyalog online: <http://www.tryapl.org>
- Dyalog forums: <http://forums.dyalog.com>
- "Mastering Dyalog APL": <http://www.dyalog.com/mastering-dyalog-apl.htm>
- Open source repository for code samples: <https://github.com/APLPi>
- Raspberry Pi add-ons: <http://quick2wire.com>
- British APL Association journal: <http://vector.org.uk>
- APL Wiki pages: <http://aplwiki.com>
- Editor keycodes and their common keystrokes are included in the appendices of the *Dyalog for UNIX User Guide*. This information is also included in the **xterm** file located in the `/opt/mdyalog/<version>/32/unicode/aplkeys` directory.



Dyalog is also available for Linux (x86/x86\_64), Microsoft Windows, Mac OS and IBM AIX. For more information, see <http://www.dyalog.com/dyalog/current-platforms.htm>.

## B Keyboard Key Mappings

Figure B-1 shows the Linux keyboard key mappings used for Dyalog glyphs.

◊	⋮	∓	∠	∑	∏	∞	∫	∂	∂	∂	∂	∂	∂	∂	
	?	ω	ε	ρ	∞	∫	∂	∂	∂	∂	∂	∂	∂	∂	
	α	∫	∫	∫	∫	∫	∫	∫	∫	∫	∫	∫	∫	∫	
		ε	∫	∫	∫	∫	∫	∫	∫	∫	∫	∫	∫	∫	

**Figure B-1:** Linux keyboard key mappings used for Dyalog glyphs

## C Example Code

This appendix includes example code to illustrate some uses of Dyalog on the Raspberry Pi.

Sample code for Dyalog on the Raspberry Pi is available from the open source repository <https://github.com/APLPi>. This repository includes the code described in this appendix as well as further examples, and will be maintained and extended as the Dyalog for Raspberry Pi project develops.

### C.1 Morse Code

This example code enables the Raspberry Pi to utilise a blinking LED to communicate messages in Morse code. It utilises quick2wire software and hardware; instructions for adding quick2wire as a Raspbian software source are available at <http://quick2wire.com/articles/how-to-add-quick2wire-as-a-raspbian-software-source>.

For the example code to produce the required output, the quick2wire gpio-admin tool needs to be installed. If quick2wire has been added as a Raspbian software source, then this can be done with the following command:

```
sudo apt-get install quick2wire-gpio-admin
```

The quick2wire interface board used in this example is detailed at <http://store.quick2wire.com/raspberrypi-interface-board.html>.

---

#### To run the example code

1. Download the Dyalog code file **Morse.dyalog**, the text file **MorseCode.txt** and the scripted namespace file **Files.dyalog** from <https://github.com/APLPi/GPIO> onto your Raspberry Pi. Assuming that you have cloned this Github repository to your home directory, these three files will be located in the **/home/<username>/** directory.
2. Open a Dyalog Session window and load the example code using SALT, for example:

```
]load /home/<username>/Morse
```

3. Initialise the Morse code table. For example:

```
Morse.Init '/home/<username>/MorseCode.txt'
```

4. Call the function GPIO with the string to be output, that is,

```
Morse.Display '<string>'
```

For example, to output the Morse code characters SOS, enter `Morse.Display 'SOS'`. An example of the output from this SOS command is available to view at <http://youtu.be/xKBS0gtSDQ8>.

The **MorseCode.txt** file contains the Dyalog code for converting letters, numbers and basic grammatical characters into Morse code.

The Dyalog code in **morse.dyalog** is as follows:

```
:Namespace Morse

A∇:require =/Files

rate←200÷1000 A length of "dit" = 200ms ("dah" will be 3x this)

gpio_pin←18 A Use GPIO pin 18

∇ Init filename;t
A Read MorseCode.txt file (actual name passed as arg)
t←FMT #.Files.GetText filename A Read file into matrix
Chars←t[;1], ' ' A Chars are in col 1 (and add space)
Codes←(↓0 1↓t)~'' A Codes are everything from column 1
Codes,←c' ' A Space is as a double long pause
∇

∇ Display
message;direction;value;folder;m;didah;is;index;output;duration
A Output Morse code using LED connected to GPIO pin

is←{(⊘ω)∇NREPLACE α 0} A Write to offset 0 of a file
index←Chars⊘message A Look message up in Chars

:If v/m←index>ρChars A Any chars not found?
('UNSUPPORTED CHARS: ',m/message)∇SIGNAL 11
:Else ∇ output←εCodes[index],'', '
:EndIf

folder←'/sys/devices/virtual/gpio/gpio',⊘gpio_pin
∇SH'gpio-admin export ',⊘gpio_pin A Creates direction & value
```

```

direction←(folder,'/direction')⎕NTIE 0 A Open the GPIO files
value←(folder,'/value')⎕NTIE 0
direction is'out' A We are doing output

:For didah :In output
  duration←(1 3 3 7)['.-', 'ıdidah]
  value is didahe'.'-' A Turn light on if dit or dah
  ⎕DL duration×rate A Wait
  value is 0 A Turn off
  ⎕DL rate A Inter-didah pause
:EndFor

⎕NUNTIE direction value
⎕SH'gpio-admin unexport ',⊘gpio_pin
▽

:EndNamespace

```

## C.2 Average Dice Throw Values

This example code enables the Raspberry Pi to plot its output using SharpPlot (SharpPlot is a graphics package that is included with the Dyalog installation – it supports the production of high quality charts in a variety of output formats using a simple set of Dyalog functions). No additional hardware is required to generate output from this example code.

---

### To run the example code

1. Open a Dyalog Session window and enter the following code:
 

```

A Load SharpPlot (needed for graphical output)
)load sharpplot

A Define function for cumulative average of throws
CumAvgRolls←{(+\?ωp6)÷ιω}

```
2. Optionally, test your function:
 

```

CumAvgRolls 10

```

This should generate output similar to the following ten values:

```

1 3 3 3.25 3 2.666666667 3 3.25 3.555555556 3.5

```
3. Label the graph axes and set the line type:
 

```

A Instantiate a SharpPlot object
sp←#.new #.SharpPlot

```

```
A Add a heading to the plot - (\UCS 10) is line feed
sp.SetHeading 'Cumulative Avgs of',(\UCS 10),'100 Dice
Throws'
```

```
A Add a label to the Y-axis
sp.SetYCaption 'Average'
```

```
A Add a label to the X-axis
sp.SetXCaption 'Throws'
```

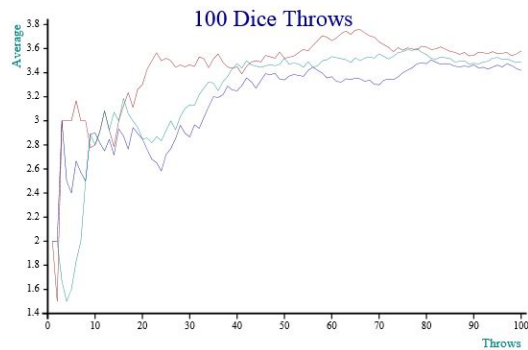
```
A Use only solid lines
sp.SetLineStyle #.LineStyle.Solid
```

4. Generate and plot your values using SharpPlot:

```
A Roll 3 dice 100 times each and plot results
sp.DrawLineGraph <CumAvgRolls>`3p100
```

```
A Save SVG file
sp.SaveSvg '<path>/<filename>.svg'
```

A file called **<filename>.svg** is saved in the specified **<path>**. Opening this file displays a graph similar to that shown in *Figure C-1*.



**Figure C-1:** Graphical representation of cumulative averages

---

# Index

<b>A</b>		
Access .....	4	
<b>C</b>		
Configuration .....	8	
Background colour .....	9	
Font Set .....	8	
Syntax colouring .....	9	
<b>I</b>		
Initialisation .....	7	
Installation .....	4	
intro workspace .....	10	
aplkeys command .....	11	
get_started command .....	11	
references command .....	12	
workspaces command .....	12	
<b>K</b>		
Keyboard key mappings (Linux) .....	15	
<b>L</b>		
Log files .....	12	
<b>M</b>		
Multiple versions of Dyalog .....	5	
<b>P</b>		
Pre-requisites for installation .....	4	
<b>U</b>		
Uninstalling Dyalog .....	6	
Upgrading Dyalog .....	6	